

This month's presenters:



Azure Landing Zones

25th September 2024 - External Community Call



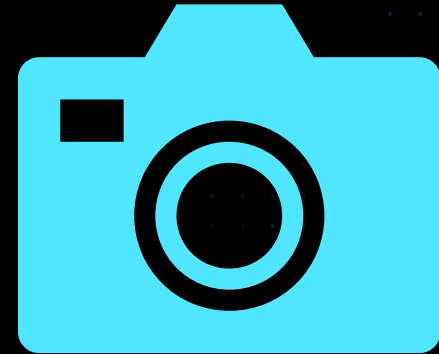
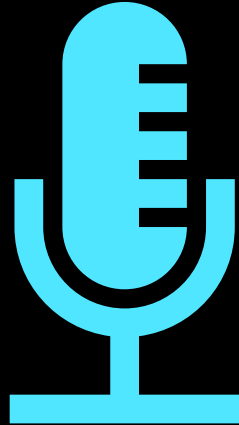
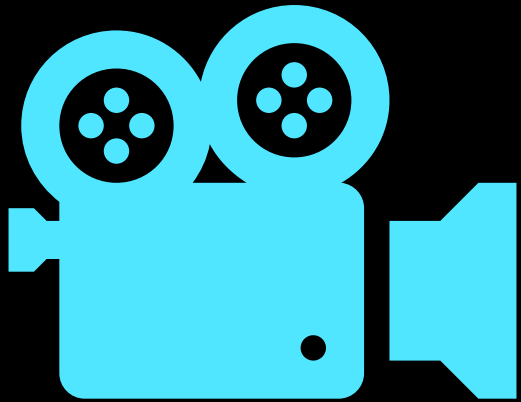
Registration:

<https://aka.ms/ALZ/CommunityCall>

Agenda (please add suggestions):

<https://aka.ms/ALZ/CommunityCallAgenda>





This meeting is being recorded





Want to hear about the latest Azure Landing Zone events, news, surveys etc.?

If so, sign up to our mailing list:

aka.ms/alz/notifications/signup

Azure Landing Zones -
Notifications - Sign Up



You can also opt out, if registered, by heading to:
aka.ms/alz/notifications/optout

Before we get started...



At any point, if you have a question please put it
in the chat!

(we have members of the team here to help 🧐)

Also we may stop and discuss your
question/point at that time, we want this to be
an open discussion with all of you 😊





Accelerators

aka.ms/ALZ/AAC

Accelerator	Category	Version	Release Date	Support
ALZ Accelerator	Platform	1.0.0	2023-01-15	ALZ
ALZ Accelerator	Platform	1.0.0	2023-01-15	ALZ
ALZ Accelerator	Platform	1.0.0	2023-01-15	ALZ

Subscription Vending

ALZ Public Roadmap

aka.ms/ALZ/Roadmap

Establish common subscription vending product lines

New Doc

Take advantage of various product lines

- Platform automation and DevOps
- Platform automation
- Subscription vending
- Common subscription vending product lines
- DevOps
- Development strategy
- Security considerations

A note on upcoming releases

Portal & Policy Refresh Q1FY25 Updates

Resiliency Updates

Help us prioritize new feature/service updates to ALZ

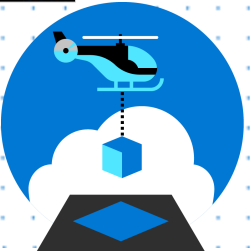
AMA in ALZ Updates

AMBA Updates

ALZ Bicep Updates

ALZ Terraform vNext Update

ALZ Bicep & Terraform Accelerator Updates





Implementation Options & Accelerators



Accelerators



Azure Architecture Center

Browse all Architectures

Architecture icons

What's new

∨ Landing zones

Deployment Options

∨ Design guides

∨ Landing zone implementations

Bicep landing zone implementation

Terraform landing zone implementation

Subscription vending implementation

Cloud operating model roles and responsibilities

The Cloud Adoption Framework describes four common cloud operating models. The Azure identity and access for landing zones recommends five role definitions (Roles) you should consider if your organizations cloud operating model requires customized Role Based Access Control (RBAC). If your organization has more decentralized operations, the Azure built-in roles may be sufficient.

The table below outlines the key roles for each of the cloud operating models.

Role	Decentralized operations	Centralized operations	Enterprise operations	Distributed operations
Azure platform owner (such as the built-in Owner role)	Workload team	Central cloud strategy	Enterprise architect in CCoE	Based on portfolio analysis - see Business alignment and Business commitments
Network management (NetOps)	Workload team	Central IT	Central Networking in CCoE	Central Networking for each distributed team + CCoE
Security operations (SecOps)	Workload team	Security operations center (SOC)	CCoE + SOC	Mixed - see: Define a security strategy
Subscription owner	Workload team	Central IT	Central IT + Application Owners	CCoE + Application Owners
Application owners (DevOps, AppOps)	Workload team	Workload team	Central IT + Application Owners	CCoE + Application Owners

Subscription Vending

Once the platform landing zone is in place, the next step is to create and operationalize application landing zones for workload owners. Subscription democratization is a [design principle](#) of Azure landing zones that uses subscriptions as units of management and scale. This approach accelerates application migrations and new application development.

[Subscription vending](#) standardizes the process for requesting, deploying, and governing subscriptions, enabling application teams to deploy their workloads faster. To get started, see [subscription vending implementation guidance](#), then review the following infrastructure-as-code modules. They provide flexibility to fit your implementation needs.

Deployment option	Description
Bicep Subscription Vending	The Subscription Vending Bicep module is designed to accelerate deployment of the individual landing zones (aka Subscriptions) within an Azure Active Directory Tenant on EA, MCA & MPA billing accounts.
Terraform Subscription Vending	The Subscription Vending Terraform module is designed to accelerate deployment of the individual landing zones (aka Subscriptions) within an Azure Active Directory Tenant on EA, MCA & MPA billing accounts

aka.ms/ALZ/AAC

Platform

The options below provide an opinionated approach to deploy and operate the [Azure landing zone conceptual architecture](#) as detailed in the Cloud Adoption Framework (CAF). It's important to note that, depending upon customizations, the resulting architecture might not be the same for all the options listed below. The differences between the options are how you deploy the architecture. They use differing technologies, take different approaches and are customized differently.

Deployment option	Description
Azure landing zone Portal accelerator	An Azure portal-based deployment that provides a full implementation of the conceptual architecture, along with opinionated configurations for key components such as management groups and policies.
Azure landing zone Terraform accelerator	This accelerator provides an orchestrator module, but also allows you to deploy each capability individually or in part.
Azure landing zone Bicep accelerator	A modular accelerator where each module encapsulates a core capability of the Azure landing zone conceptual architecture . While the modules can be deployed individually, the design proposes the use of orchestrator modules to encapsulate the complexity of deploying different topologies with the modules.

In addition, after deploying the landing zone, you will need to plan to operate it and maintain it. Review the guidance on how to [Keep your Azure landing zone up to date](#).

Application

Application landing zones are one or more subscriptions that are deployed as environments for workloads or applications. These workloads can take advantage of services deployed in platform landing zones. The application landing zones can be centrally managed applications, decentralized workloads, or technology platforms such as Azure Kubernetes Service that host applications.

You can use the options below to deploy and manage applications or workloads in an application landing zone.

Application	Description
AKS landing zone accelerator	An open-source collection of ARM, Bicep, and Terraform templates that represent the strategic design path and target technical state for an Azure Kubernetes Service (AKS) deployment.
Azure App Service landing zone accelerator	Proven recommendations and considerations across both multi-tenant and App Service Environment use cases with a reference implementation for ASEv3-based deployment
Azure API Management landing zone accelerator	Proven recommendations and considerations for deploying APIM management with a reference implementation showcasing App Gateway with internal APIM instance backed Azure Functions as backend.
SAP on Azure landing zone accelerator	Terraform and Ansible templates that accelerate SAP workload deployments using Azure Landing Zone best practices, including the creation of Infrastructure components like Compute, Networking, Storage, Monitoring & build of SAP systems.
HPC landing zone accelerator	An end-to-end HPC cluster solution in Azure using tools like Terraform, Ansible, and Packer. It addresses Azure Landing Zone best practices, including implementing identity, Jump-box access, and autoscale.
Azure VMware Solution landing zone accelerator	ARM, Bicep, and Terraform templates that accelerate VMware deployments, including AVS private cloud, jumpbox, networking, monitoring and add-ons.
Azure Virtual Desktop Landing Zone Accelerator	ARM, Bicep, and Terraform templates that accelerate Azure Virtual Desktop deployments, including creation of host pools, networking, storage, monitoring and add-ons.
Azure Red Hat OpenShift landing zone accelerator	An open source collection of Terraform templates that represent an optimal Azure Red Hat OpenShift (ARO) deployment that is comprised of both Azure and Red Hat resources.
Azure Arc landing zone accelerator for hybrid and multicloud	Arc enabled Servers, Kubernetes, and Arc-enabled SQL Managed Instance see the Jumpstart ArcBox overview.



ALZ Public Roadmap

aka.ms/ALZ/Roadmap

Azure Landing Zones Public Roadmap

Backlog | By priority | By size

Filter by keyword or by field

- We are thinking about... 1**
 - Draft: CAF Naming Alignment (ALZ Portal, Terraform, Bicep Implementations) [Low, Large]
- What we are working on... 10**
 - Draft: Azure Policy Versioning ALZ strategy [High, Medium]
 - Draft: RBAC Constrained Delegation for ALZ [High, Small]
 - Draft: Zone redundancy enhancements [High, Medium]
 - Draft: Multi-region for ALZ [High, Medium]
- What we have completed 15**
 - Draft: Bicep automation in the ALZ Accelerator [High, X-Large]
 - Draft: Subscription vending guidance for common application landing zone vending scenario's [Medium, Medium]
 - Draft: MMA Deprecation (MMA --> AMA or Alternatives) [High, X-Large]
 - Draft: CAF IAM docs refresh [Medium, Large]





ALZ What's New?

aka.ms/ALZ/WhatsNew

Single place to
stay up-to-
date



🔗 Updates

Here's what's changed in Enterprise Scale/Azure Landing Zones:

🔗 September 2024

🔗 Documentation

- The [ALZ Policies](#) and [ALZ Deprecated Services](#) documentation has been updated to reflect changes in AMBA. To provide more flexibility for future growth AMBA is transitioning from a single Landing Zone policy initiative and instead is adopting a modular approach by splitting the Landing Zone initiative into the following distinct components (initiatives):
 - Key Management
 - Load Balancing
 - Network Changes
 - Recovery Services
 - Storage
 - VM
 - Web
- [Guidance](#) for updating and implementing these changes in existing environments is available on the AMBA website.
- Updated the Azure Monitoring Baseline Alerts (AMBA) integration section in the portal accelerator to include new features exposed by the AMBA solution. To read more on the changes <https://azure.github.io/azure-monitor-baseline-alerts/patterns/alz/Whats-New/>

🔗 August 2024

NOTE TO CONTRIBUTORS: Due to security compliance requirements, we've made core changes that mean we no longer automatically build the policies, initiatives and roles templates after changes in the `src`



Establish common subscription vending product lines

New Doc

Platform automation and DevOps

Overview

> Platform automation

Subscription vending

Common subscription vending product lines

> DevOps

> Development strategy

> Security considerations

Take advantage of various product lines

Subscriptions that application teams require to deliver their workloads and services come in many types and styles. Outside of application teams, your organization might have other requirements that necessitate the use of an Azure subscription, such as various compliance and data-handling rules or architecture patterns.

When you decide on your organization's approach to designing and implementing subscription vending, consider asking these questions:

- What other resources should the platform team vend as part of the subscription vending process?
- For each application team, do you deploy multiple subscriptions, such as one per environment, by default?
- For every application, do you peer or connect the spoke virtual network back to your connectivity hubs by default?
- How should you structure role-based access control (RBAC) within each subscription?
- How should you govern and control resources and styles of architecture, or archetypes, that you use within subscriptions?

Note

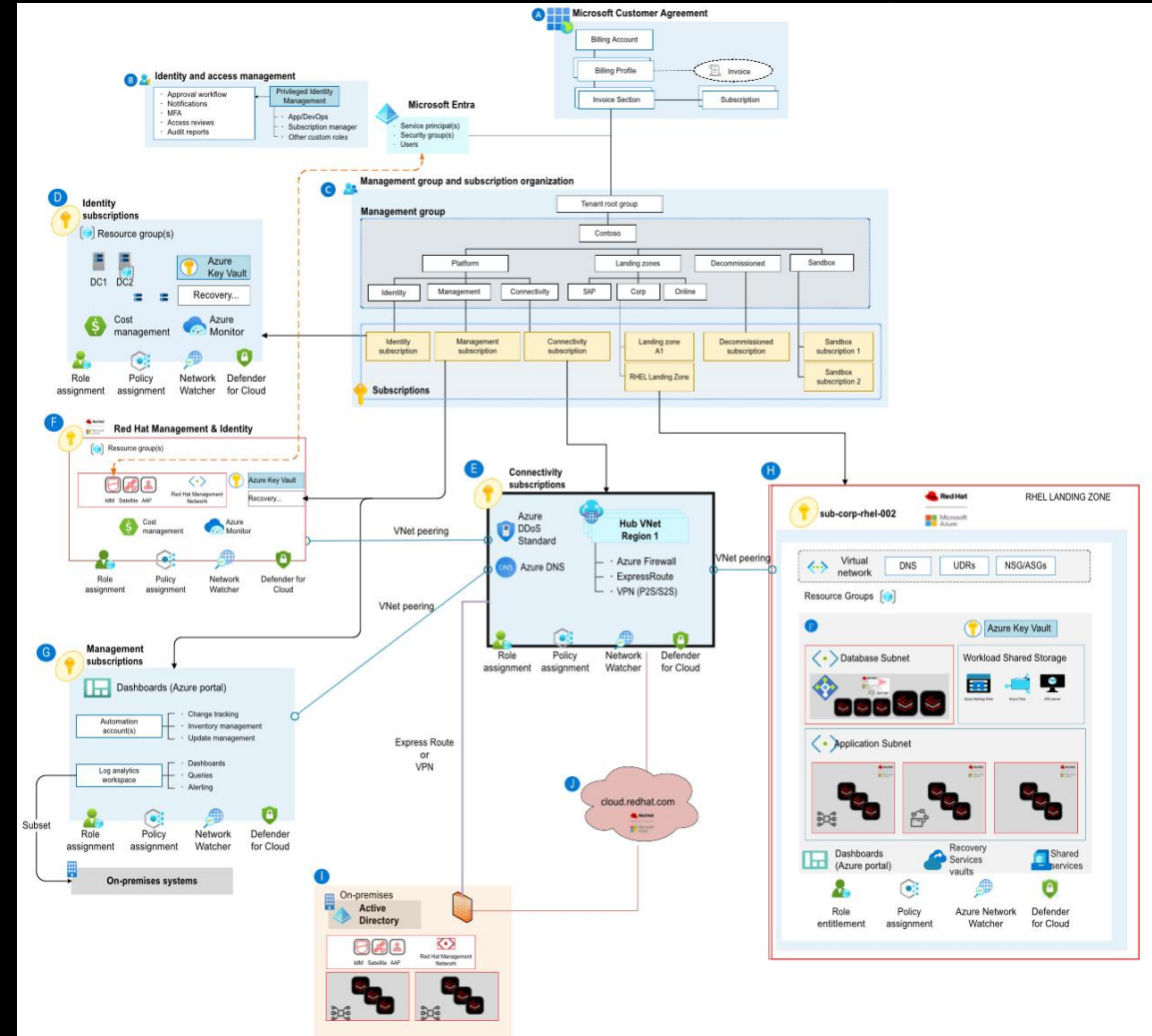
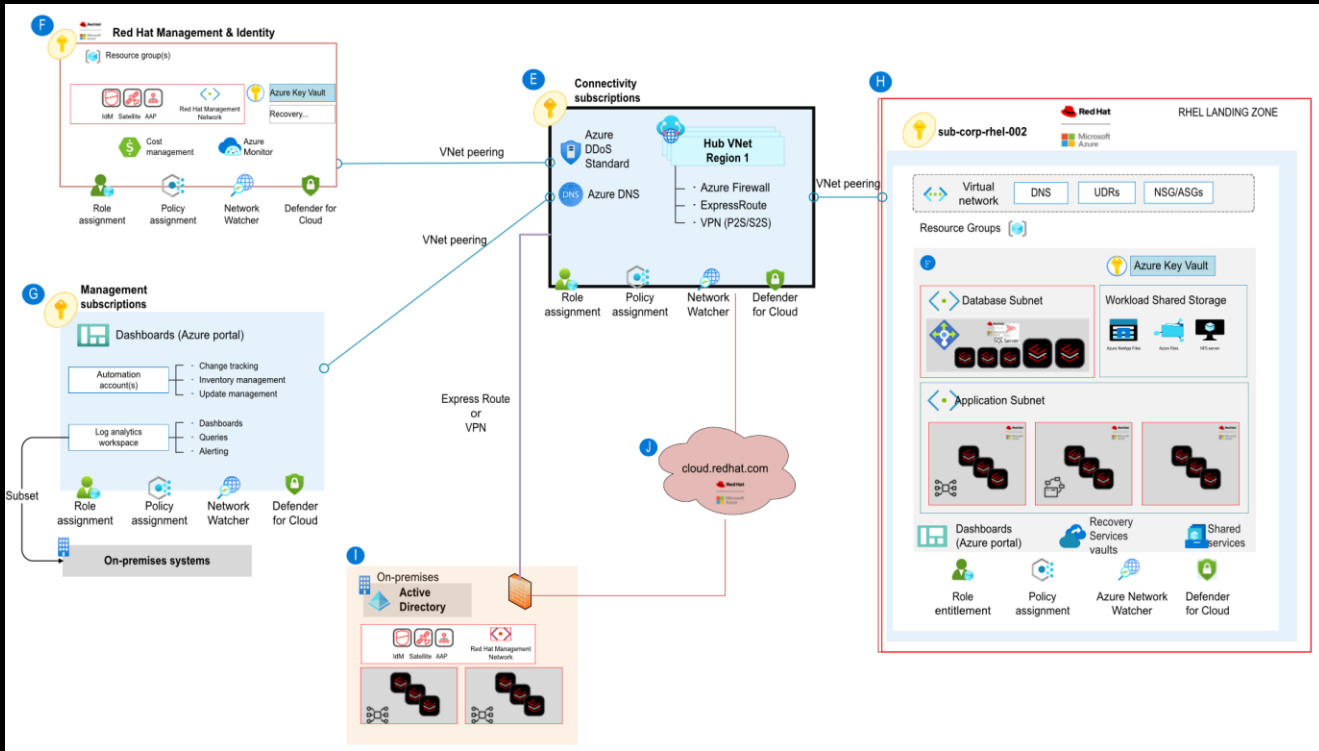
Use these examples as a starting point. You can customize and expand these product lines to cater to the needs of your organization.

Common product lines for subscription vending include:

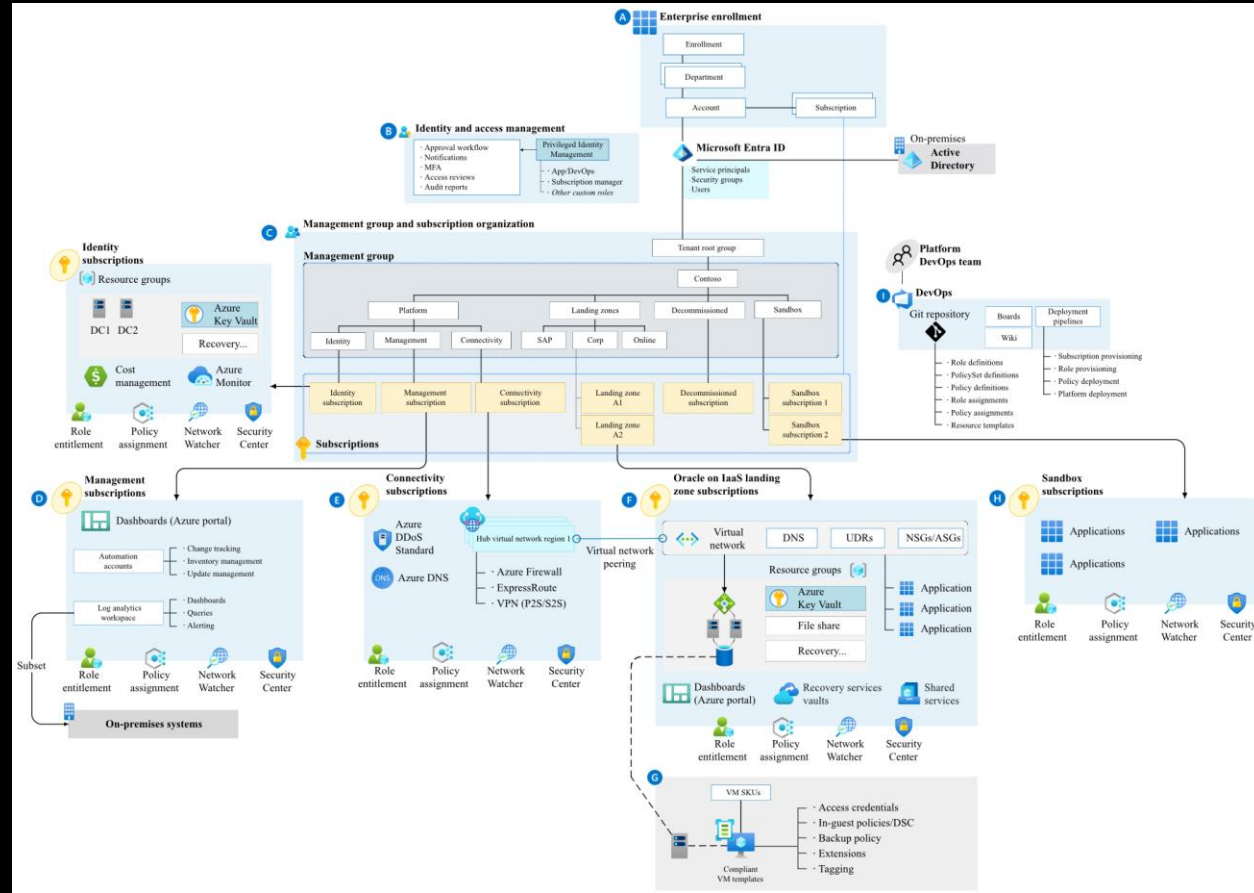
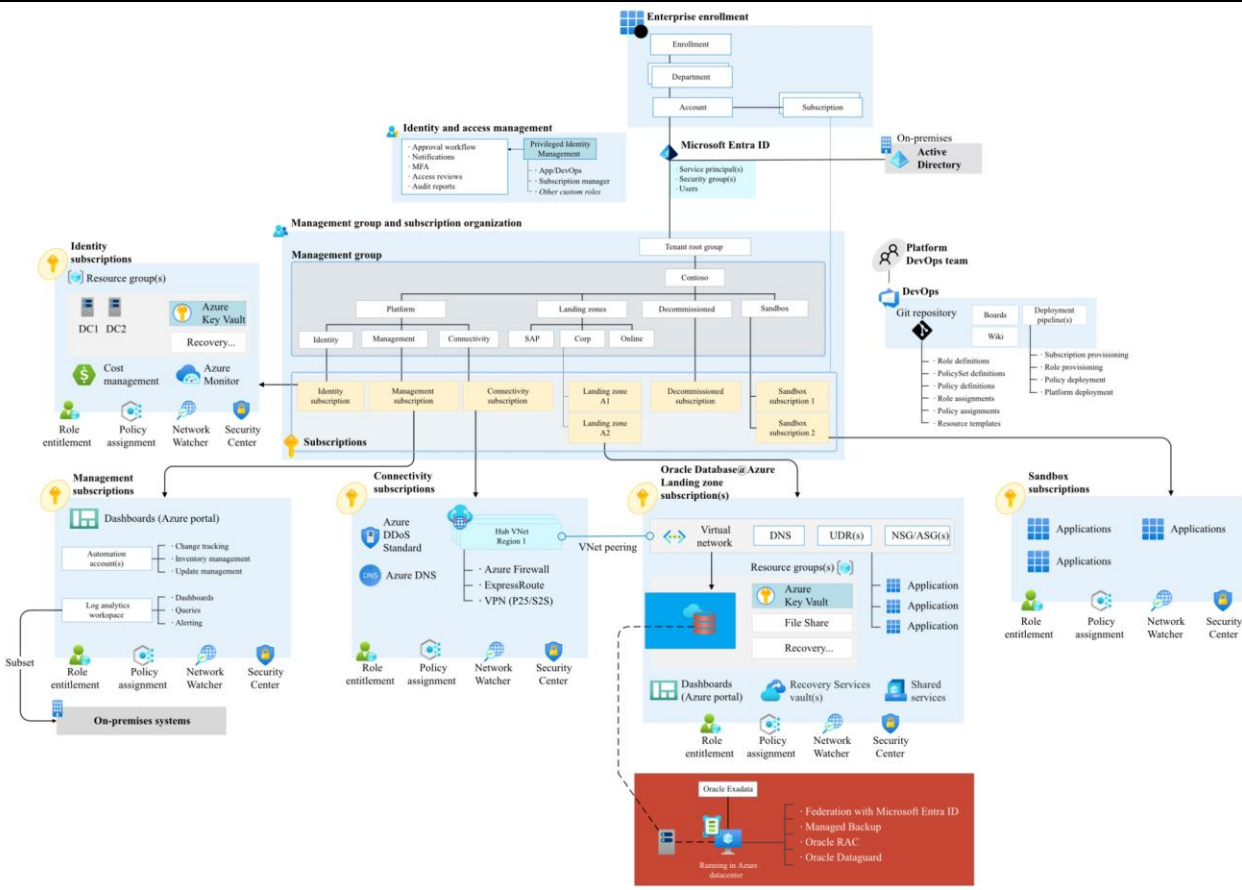
- **Corp connected:** Workloads that require traditional Layer-3 IP routing connectivity to other applications and on-premises environments via the Connectivity subscription.
- **Online:** Workloads that connect with other applications through modern connectivity services and architectures, such as Azure Private Link or interaction via exposed APIs or endpoints from each application.
- **Tech platform:** Workloads that build a platform on which you can build other applications. For example, an Azure Kubernetes Service (AKS) fleet of clusters that an AKS platform team manages can host other applications within its AKS clusters on behalf of other application teams.
- **Shared application portfolio:** Shared workloads among the same application teams for a common set of closely coupled applications. You don't want to host the applications on their own or with any specific workload.
- **Sandbox:** An area where application teams can build a proof of concept (PoC) or minimum viable product (MVP) and impose fewer controls, so the team can promote development, invention, and freedom to build the best possible application from the catalog of available Azure services.



New Application Landing Zone Accelerator: RHEL



New Application Landing Zone Accelerators: Oracle



A sneak peak into the future of our wikis



The screenshot shows a web browser displaying a documentation page. The top navigation bar is dark blue with the text "Azure Landing Zones Documentation" and three icons: a refresh icon, a list icon, and a settings icon. Below the navigation bar is a search bar with the placeholder text "Search...". To the right of the search bar is the breadcrumb "Azure Landing Zones Documentation" and a link "Edit page". The main content area has a heading "Azure Landing Zones Documentation" and the text "TBC...". The footer is dark blue and contains the text "Built with [Hugo](#) and ❤️" and "Content licensed under [MIT License](#)". A "Back to top" link is located in the bottom right corner of the footer.

📖 Azure Landing Zones Documentation



🔍 Search...

📄 Azure Landing Zones Documentation

✎ Edit page

Navigation

Azure Landing Zones Documentation

TBC...

Built with [Hugo](#) and ❤️

Content licensed under [MIT License](#)

⬆️ [Back to top](#)



CAF What's New?



... / Azure / Cloud Adoption Framework / Get started /

Filter by title

- Cloud Adoption Framework for Azure
- About the Framework
- What's new**
- > Scenarios
- > Adoption journeys
- > Strategy
- > Plan
- > Ready
- > Adopt
- > Govern
- > Manage
- > Secure
- > Organize
- > Resources

What's new in the Microsoft Cloud Adoption Framework for Azure

Article • 05/09/2024 • 35 contributors [Feedback](#)

In this article

- [August 2024](#)
- [July 2024](#)
- [June 2024](#)
- [May 2024](#)
- [April 2024](#)
- [March 2024](#)
- [February 2024](#)
- [January 2024](#)
- [December 2023](#)
- [November 2023](#)
- [October 2023](#)
- [September 2023](#)

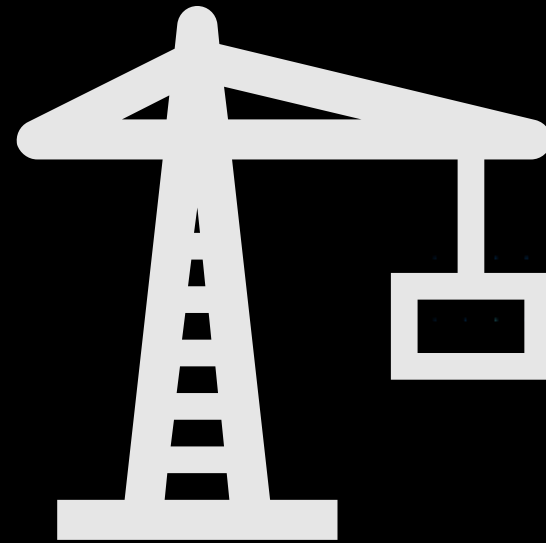
[Show less](#)

We build the Microsoft Cloud Adoption Framework collaboratively with our customers, partners, and internal Microsoft Teams. We release new and updated content ~~for the framework as it becomes available.~~ These new



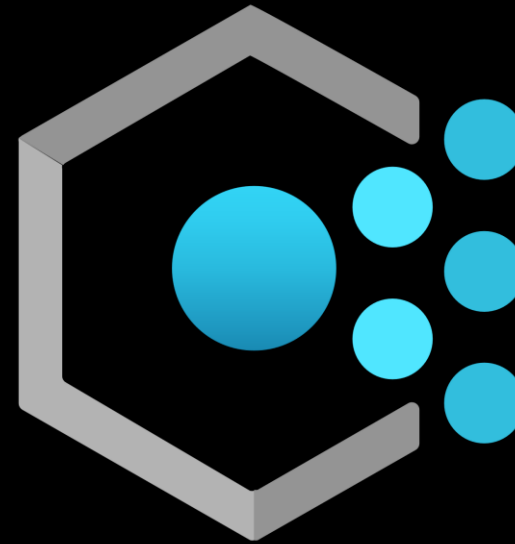


A note on upcoming releases





Portal & Policy Refresh Q1FY25 Updates





ALZ Policy News

aka.ms/alz/whatsnew



- **Policy Refresh Q1 FY25**

- Always review "What's New"
- No "breaking" changes!

- **Enhancing Quality**

- Scenario testing
- Policy quality testing

- **Policy Versioning**

- Azure Policy Versioning has landed (preview)
- What is ALZ doing?

- **Security**

- TLS 1.3 support ready in ALZ custom policies, more complicated for built-ins
- Virtual Network – Private Subnet auditing
- Various backend security enhancements

- **Diag Settings**

- Choice between AllLogs and AuditOnly





ALZ Policy Roadmap

aka.ms/alz/roadmap



- Sovereign Clouds
 - Have secured access to the sovereign clouds: US Gov and China
 - Working to ensure successful deployments in these sovereign clouds (a lot of changes required)





ALZ Portal News

aka.ms/alz/portal



- Workload Specific Compliance
 - AI Ready – governance for AI Landing Zones

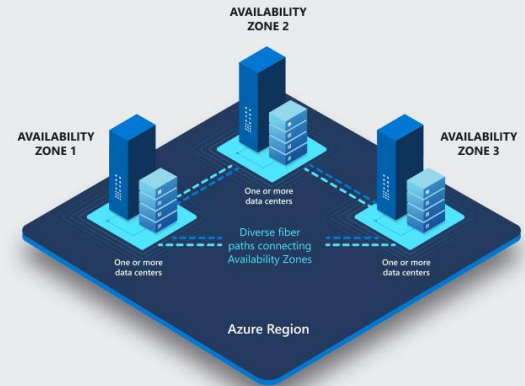
- Sentinel
 - Updated portal to new APIs for valid Sentinel deployment

- Big update to AMBA integration
 - Exposing new integration capabilities
 - More choice for what to enable





Resiliency Updates

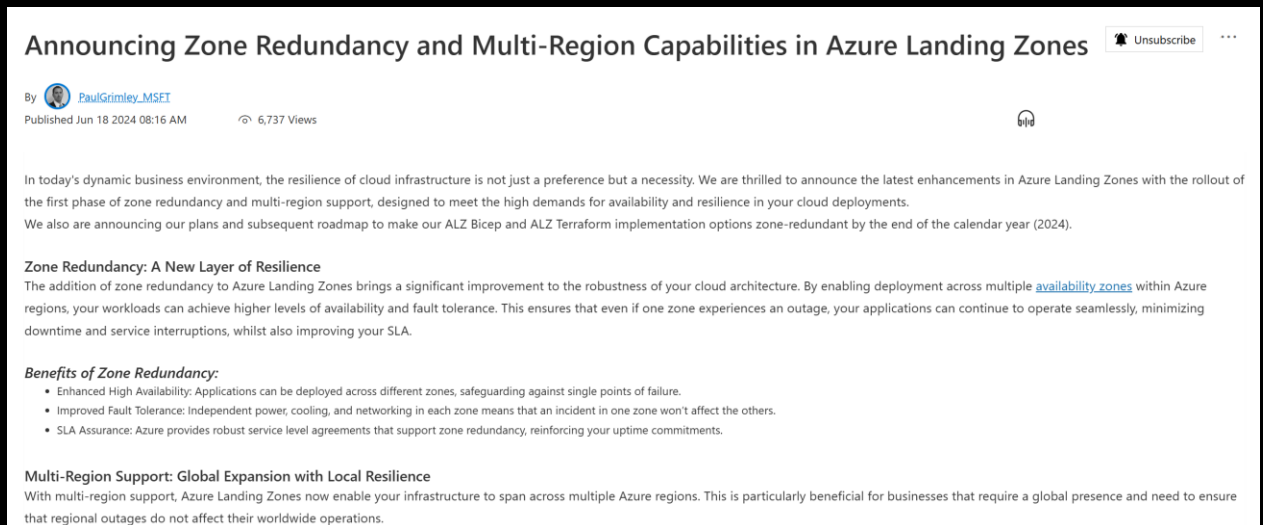





Zone Redundancy Updates



- **BLOG:** Announcing Zone Redundancy and Multi-Region Capabilities in Azure Landing Zones
<https://aka.ms/alz/resiliency/blog>
- Phased Approach
 - ~~Phase 1 – Portal, Bicep and Terraform Accelerators zone redundant by default by end of Q2 CY24~~
 - Phase 2 – Bicep and Terraform Modules zone redundant by default **Early 2025**



Announcing Zone Redundancy and Multi-Region Capabilities in Azure Landing Zones Unsubscribe

By  PaulGrimley_MSET
Published Jun 18 2024 08:16 AM 6,737 Views

In today's dynamic business environment, the resilience of cloud infrastructure is not just a preference but a necessity. We are thrilled to announce the latest enhancements in Azure Landing Zones with the rollout of the first phase of zone redundancy and multi-region support, designed to meet the high demands for availability and resilience in your cloud deployments. We also are announcing our plans and subsequent roadmap to make our ALZ Bicep and ALZ Terraform implementation options zone-redundant by the end of the calendar year (2024).

Zone Redundancy: A New Layer of Resilience
The addition of zone redundancy to Azure Landing Zones brings a significant improvement to the robustness of your cloud architecture. By enabling deployment across multiple [availability zones](#) within Azure regions, your workloads can achieve higher levels of availability and fault tolerance. This ensures that even if one zone experiences an outage, your applications can continue to operate seamlessly, minimizing downtime and service interruptions, whilst also improving your SLA.

Benefits of Zone Redundancy:

- **Enhanced High Availability:** Applications can be deployed across different zones, safeguarding against single points of failure.
- **Improved Fault Tolerance:** Independent power, cooling, and networking in each zone means that an incident in one zone won't affect the others.
- **SLA Assurance:** Azure provides robust service level agreements that support zone redundancy, reinforcing your uptime commitments.

Multi-Region Support: Global Expansion with Local Resilience
With multi-region support, Azure Landing Zones now enable your infrastructure to span across multiple Azure regions. This is particularly beneficial for businesses that require a global presence and need to ensure that regional outages do not affect their worldwide operations.





Multi-region Updates

- ALZ Portal supports multi-region **today**
- ALZ Accelerators
 - Bicep – releasing imminently
 - Terraform – Available today
- ALZ IaC Modules
 - Bicep – releasing imminently
 - Terraform – releasing imminently
 - Terraform vNext – will be available from release



Azure CTO Blog



Achieve agility and scale in a dynamic cloud world

Published Sep 18, 2024 · 4 min read
By [Mark Russinovich](#), Chief Technology Officer and Technical Fellow, Microsoft Azure



How to adopt a multi-region cloud strategy with Azure

The Cloud Adoption Framework is proven guidance that's designed to help you create and implement the business and technology strategies necessary for your organization to succeed in the cloud. It provides proven practices, documentation, and tools that cloud architects, IT professionals, and decision makers need to successfully achieve their short and long-term objectives. For organizations that are currently running their workloads from an Azure region, new workloads can be built in any of our Azure regions to leverage the specific benefits such as reduced carbon footprint, more competitive pricing, or advanced AI capabilities.

You can also find more information on how to design and deploy your cloud solutions across multiple Azure regions in the following articles and design areas from the [Cloud Adoption Framework](#) and the [Well-Architected Framework](#):

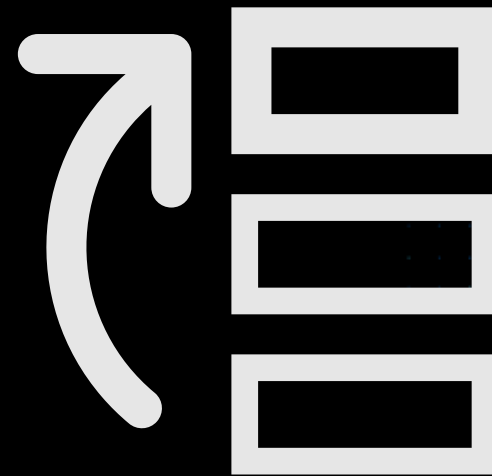
- 1. Plan:** Choose the right Azure regions for your landing zone based on your business needs and compliance requirements.
 - [Select Azure regions.](#)
 - [Landing zone regions.](#)
- 2. Implement:** Design and deploy a network topology, security and resources that connects your landing zone regions and supports high availability and scalability.
 - Modify an Azure landing zone architecture to [meet requirements across multiple locations.](#)
 - [Networking topology and connectivity.](#)
 - [Resource organization.](#)
 - [Identity and access management.](#)
 - Announcing [zone redundancy and multi-region capabilities](#) in Azure landing zones.

- Azure CTO Mark Russinovich blog - *'Achieve agility and scale in a dynamic cloud world'*
- [Achieve agility and scale in a dynamic cloud world | Microsoft Azure Blog](#)





Help us prioritize new
feature/service
updates to ALZ



We need your help

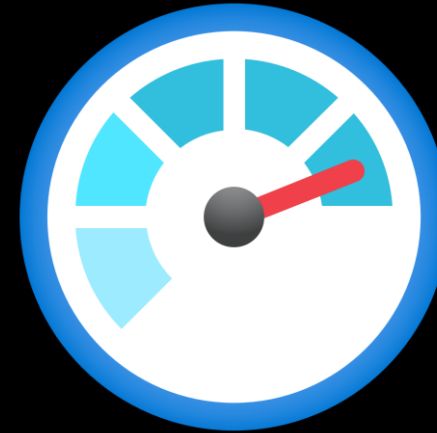
Help us prioritize what new features we should work on to make Azure Landing Zones better for you


aka.ms/ALZ/ALZFeatures





AMA in ALZ Updates





MMA was retired on August 31

What are the next steps?



- **MMA: Data upload**

- Cloud ingestion services will gradually reduce support for MMA agents, which may result in decreased support and potential compatibility issues for MMA agents over time.
- Ingestion for MMA will be unchanged until February 1, 2025.

- **MMA: Installation**

- The ability to install the legacy agents will be removed from the Azure Portal and installation policies for legacy agents will be removed. You can still install the MMA agents extension as well as perform offline installations.

- **Update guidance for existing ALZ deployments**

- Portal accelerator: <http://aka.ms/alz/ama/migration>
- Terraform: [\[User Guide\] Upgrade from v5.2.1 to v6.0.0 · Azure/terraform-azurerm-caf-enterprise-scale Wiki \(github.com\)](#)
- Bicep: [Release v0.18.0 · Azure/ALZ-Bicep \(github.com\)](#)

- ****Centralized UAMI Policy documentation update****

- [Use Azure Policy to assign managed identities \(preview\) - Managed identities for Azure resources | Microsoft Learn](#)





AMBA Updates





AMBA Updates

aka.ms/amba/patterns/alz



- ALZ Portal Accelerator has been updated
- Uses latest AMBA-ALZ release
- Added additional action group capabilities (Webhook, ARM Roles)
- Resource category alert enablement for Landing Zones

Resource category alert enablement for Landing Zones

i You can selectively enable/disable Azure Monitor Baseline Alerts configuration for resource categories applied to the Landing Zones management group.

Enable AMBA for Azure Arc-enabled Servers ⓘ	<input checked="" type="radio"/> Yes (recommended) <input type="radio"/> No
Enable AMBA for Key Management Services ⓘ	<input checked="" type="radio"/> Yes (recommended) <input type="radio"/> No
Enable AMBA for Load Balancing Services ⓘ	<input checked="" type="radio"/> Yes (recommended) <input type="radio"/> No
Enable AMBA for alterations in Network Routing and Security ⓘ	<input checked="" type="radio"/> Yes (recommended) <input type="radio"/> No
Enable AMBA for Recovery Services ⓘ	<input checked="" type="radio"/> Yes (recommended) <input type="radio"/> No
Enable AMBA for Storage Services ⓘ	<input checked="" type="radio"/> Yes (recommended) <input type="radio"/> No
Enable AMBA for Azure Virtual Machines ⓘ	<input checked="" type="radio"/> Yes (recommended) <input type="radio"/> No
Enable AMBA for Web Services ⓘ	<input checked="" type="radio"/> Yes (recommended) <input type="radio"/> No





AMBA Updates



aka.ms/amba/patterns/alz

- NEW: AMBA ALZ Portal Accelerator
- aka.ms/amba/alz/portal

Azure Monitor Baseline Alerts Accelerator (Preview) ...
Deploy from a custom template

🔔 New! Deployment Stacks let you manage the lifecycle of your deployments. Try it now →

Deployment Settings | Management Groups Settings | Notification Settings | Review + create

Template

📄 Customized template ^{of}
43 resources

[Edit template](#) [Edit parameters](#)

AMBA Accelerator

Region * ^{of} North Europe

Resource group for baseline alerts * ^{of} rg-amba-monitoring-001

Resource group location * ^{of} North Europe

Bring Your Own User Assigned Managed Identity ^{of} No

User Assigned Managed Identity Name ^{of} id-amba-prod-001

Management Subscription Id ^{of}

Resource Group Tags ^{of} {"_deployed_by_amba": "true"}

Telemetry Tracking Using Customer Usage Attribution (PID)

AMBA Accelerator will automatically import all policies and initiatives and will assign the Deploy Azure Monitor Baseline Alerts for Service Health policy initiative at the intermediate root. While it's recommended to implement the alert policies and initiatives to an ALZ Management Group hierarchy, it is not a technical requirement. These policies and initiatives can be implemented in existing brownfield scenarios that don't adhere to the ALZ Management Group hierarchy. For example, in hierarchies where there is a single management group, or where the structure does not align to ALZ. At least one management group is required.

Deploying templates at the management group scope enables scenarios like applying policies and assigning roles at the management group level. You can change the deployment scope by updating the schema in the template.

Select a management group

AMBA Accelerator

Region * ^{of} North Europe

Resource group for baseline alerts * ^{of} rg-amba-monitoring-001

Resource group location * ^{of} North Europe

Bring Your Own User Assigned Managed Identity ^{of} No

User Assigned Managed Identity Name ^{of} id-amba-prod-001

Management Subscription Id ^{of}

Resource Group Tags ^{of} {"_deployed_by_amba": "true"}

Telemetry Tracking Using Customer Usage Attribution (PID)

AMBA Accelerator will automatically import all policies and initiatives and will assign the Deploy Azure Monitor Baseline Alerts for Service Health policy initiative at the intermediate root. While it's recommended to implement the alert policies and initiatives to an ALZ Management Group hierarchy, it is not a technical requirement. These policies and initiatives can be implemented in existing brownfield scenarios that don't adhere to the ALZ Management Group hierarchy. For example, in hierarchies where there is a single management group, or where the structure does not align to ALZ. At least one management group is required.

Deploying templates at the management group scope enables scenarios like applying policies and assigning roles at the management group level. You can change the deployment scope by updating the schema in the template.

Select a management group

Previous Next **Review + create**



AMBA Updates



- Key Management Initiative
- Load Balancing Initiative
- Network Changes Initiative
- Recovery Services Initiative
- Storage Initiative
- VM Initiative
- Hybrid Compute
- Web initiative

Alerting-LandingZone Initiative

Management group and subscription organization

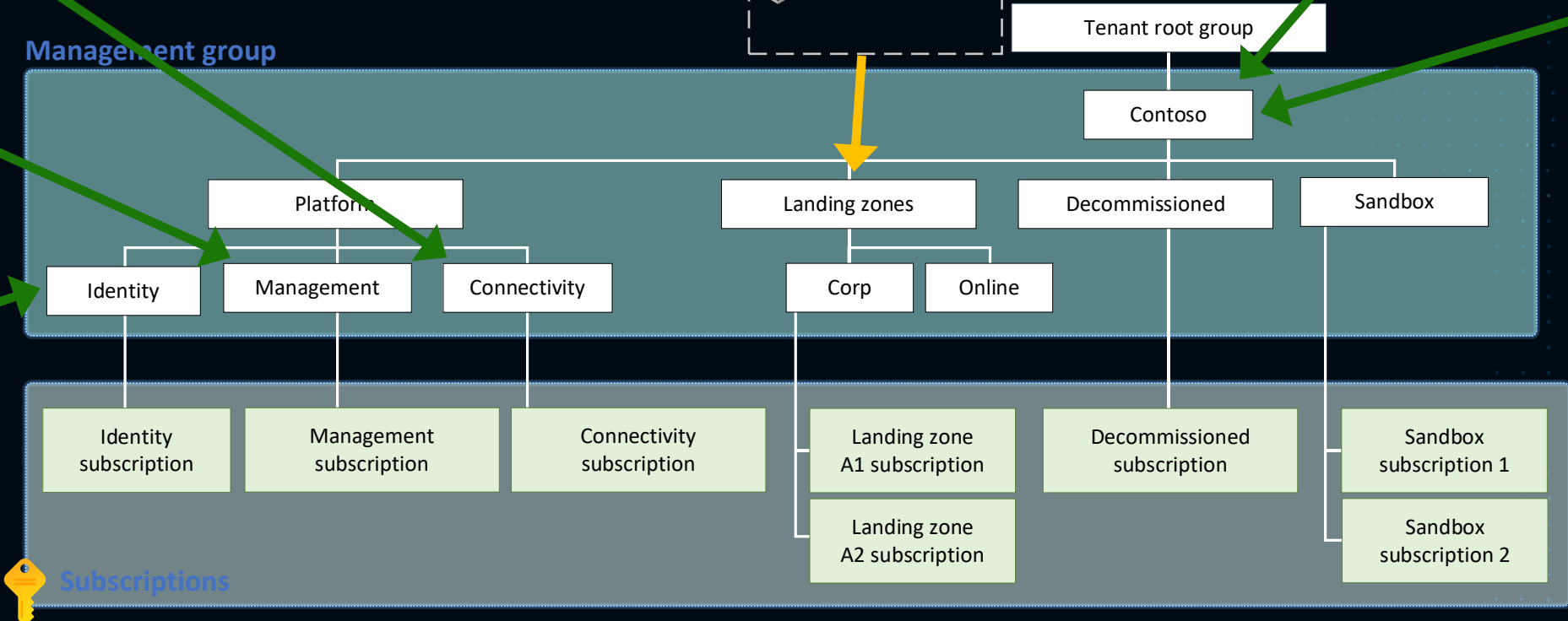
Alerting-Connectivity Initiative

Alerting-Management Initiative

Alerting-Identity Initiative

Alerting-ServiceHealth Initiative

Notification Assets Initiative



Subscriptions





AMBA Updates



aka.ms/ambapatterns/alz

- Threshold override
 - `_amba-AvailableMemoryPercentage-threshold-override_`
- New alert rules
 - Azure Key Vault Managed HSM
 - Modify Recovery Services vaults to enable new Azure Monitor alerts for Azure Site Recovery
 - Daily Cap threshold alert on a Log Analytics workspace

- Updated the disable resource monitoring feature

```
"MonitorDisableTagName": {  
  "type": "String",  
  "defaultValue":  
"MonitorDisable"  
},  
"MonitorDisableTagValues": {  
  "type": "Array",  
  "defaultValue": [  
    "true",  
    "Test",  
    "Dev",  
    "Sandbox"  
  ]  
}
```





AMBA Roadmap



aka.ms/amba/patterns/alz

- Quota Alerts
- AMBA for ALZ Bicep
 - AMBA is not yet integrated into the ALZ-Bicep repository, However, this integration is underway and will soon be available. If you wish to deploy AMBA now, please see this [Wiki](#)
- AMBA for ALZ Terraform
 - We are working on integrating with the Azure-Landing-Zones-Library and updating de module.
- Adding alerts for:
 - Azure Monitor Ingestion limit alert
 - Application Insight Throttling alert
 - Activity Log Alert for deleting Application Insight





ALZ Bicep Updates





ALZ-Bicep Updates

v0.19.2 just released!



- Guidance and/or refactor for incorporating multi-region support within networking modules
- Launch of version 2 of the ALZ-Bicep Accelerator
- Networking Enhancements:
 - Add DDoSEnabled toggle for ALZDefaultPolicyAssignments Module
 - Add Firewall Policy SNAT configuration
 - Added support for Active-Active Virtual Network Gateways
- Policy Refresh H2 has been released
 - Built-in policies for diagnostic settings
 - Transition to built-in policies for Azure Monitor Agent (AMA)
 - Sentinel onboarding via onBoardingStates API

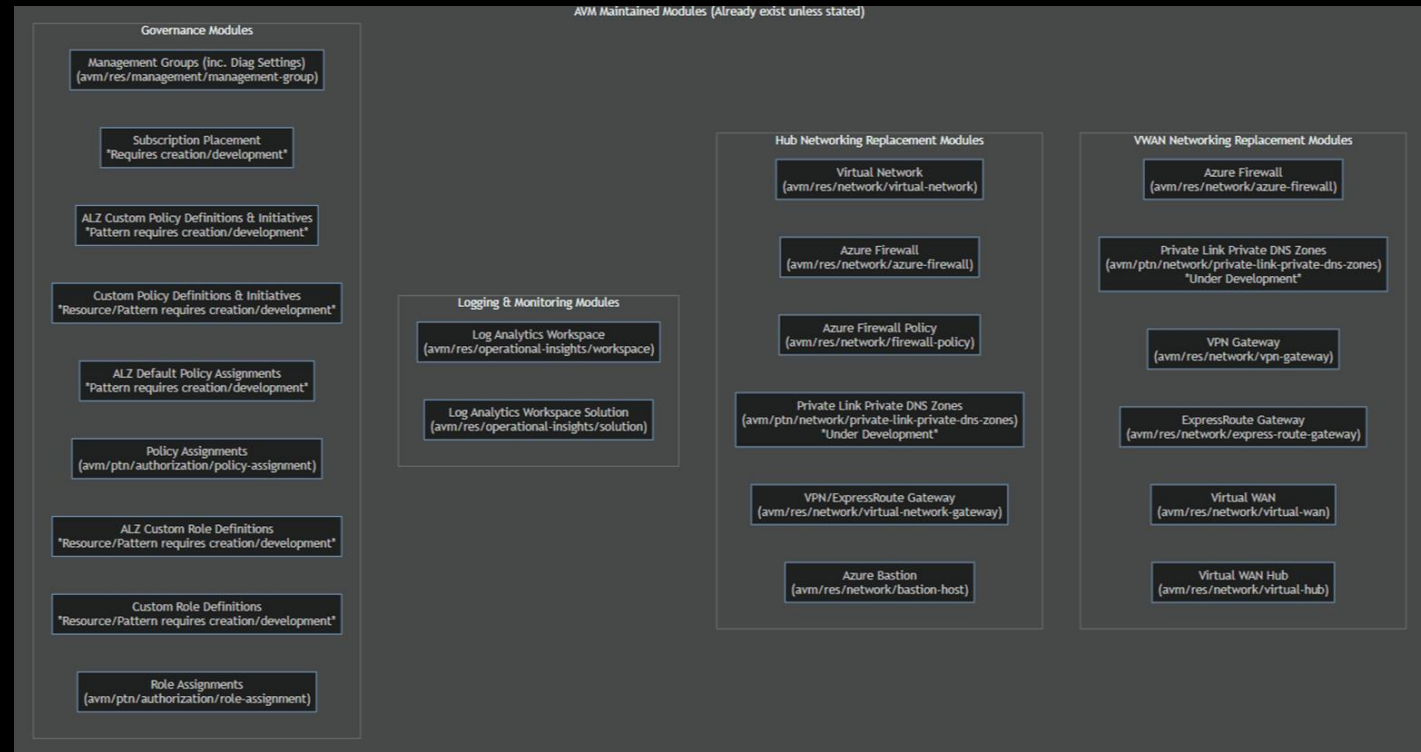


ALZ-Bicep Roadmap

Public Roadmap



- Multi-region support in the Accelerator framework
- Refactor of ALZ-Bicep with [Azure Verified Modules](#)
- October Policy Refresh
- Variety of Bug Fixes:
 - Fix issue with Accelerator V2 with deploying custom modules
 - Missing permissions on data collection rules for policy identities related to AMA
 - General Accelerator v2 Issues and Documentation Enhancements



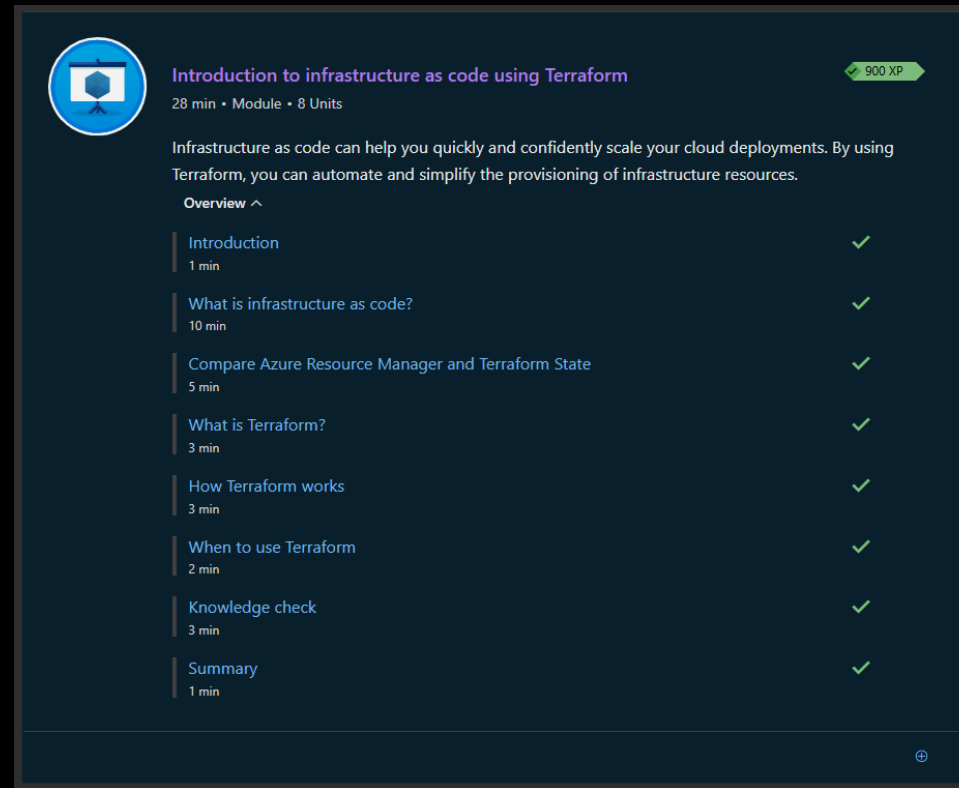


ALZ Terraform vNext Update



Terraform on Azure Learning Path

- First module released: Introduction to Infrastructure as code using Terraform: aka.ms/tf/fundamentals
- More modules coming soon!



The screenshot shows a learning path card for "Introduction to infrastructure as code using Terraform". The card features a blue circular icon with a white Terraform logo. The title is "Introduction to infrastructure as code using Terraform" with a green "900 XP" badge. Below the title, it states "28 min • Module • 8 Units". A descriptive paragraph reads: "Infrastructure as code can help you quickly and confidently scale your cloud deployments. By using Terraform, you can automate and simplify the provisioning of infrastructure resources." Underneath, there is an "Overview" section with a list of units, each with a duration and a green checkmark indicating completion:

Unit	Duration	Status
Introduction	1 min	✓
What is infrastructure as code?	10 min	✓
Compare Azure Resource Manager and Terraform State	5 min	✓
What is Terraform?	3 min	✓
How Terraform works	3 min	✓
When to use Terraform	2 min	✓
Knowledge check	3 min	✓
Summary	1 min	✓

A small plus icon is visible in the bottom right corner of the card.

vNext Composition of Azure Verified Modules

Management

avm-ptn-alz

- Management Groups
- Policy
- Role Definitions

avm-ptn-alz-management

- Log Analytics
- Automation Account

Connectivity

Virtual WAN Option

avm-ptn-virtualwan

- Virtual WAN
- Firewalls

Hub and Spoke Virtual Network Option

avm-ptn-hubnetworking

- Hub Virtual Networks
- Peering
- Firewalls

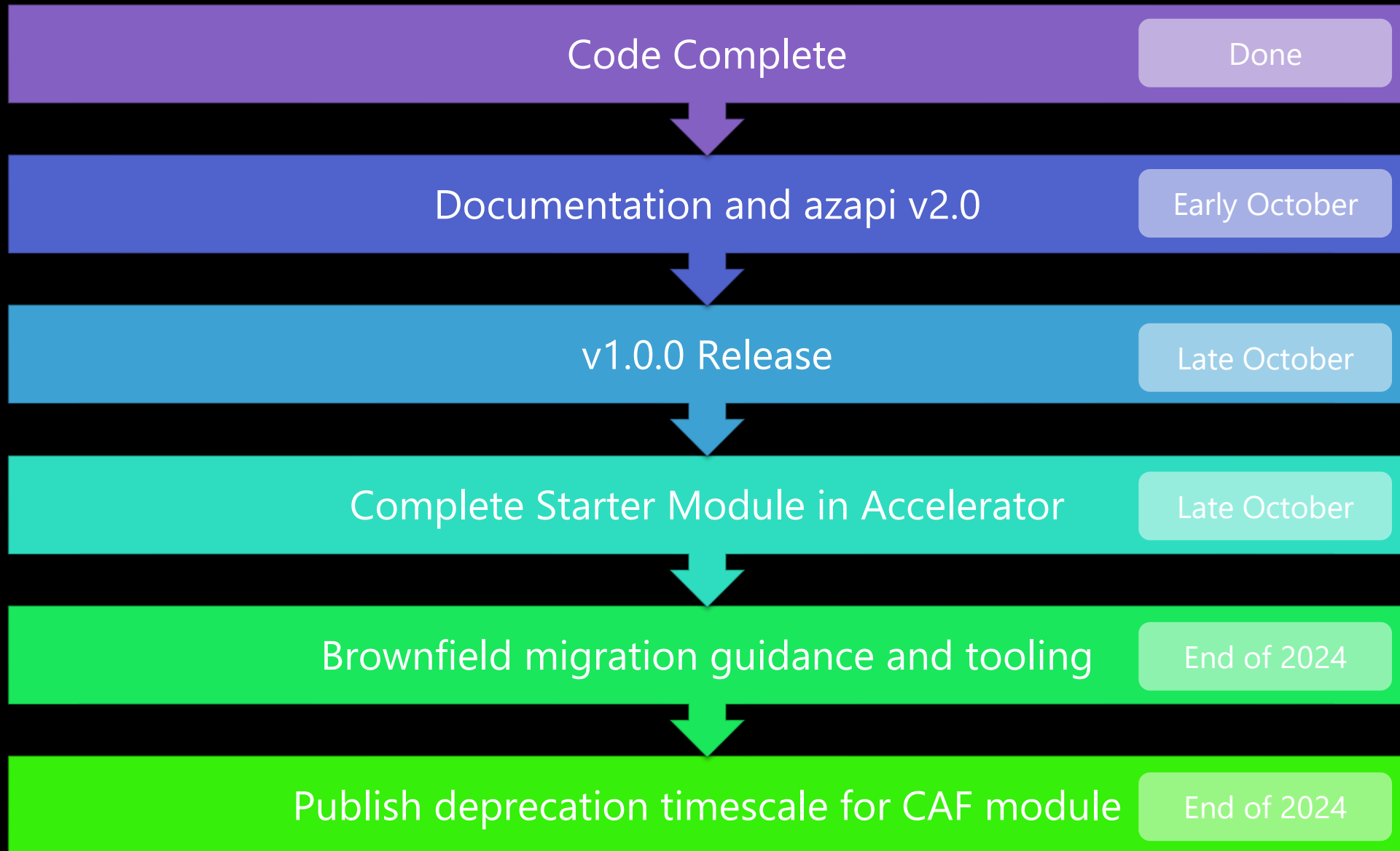
avm-ptn-vnetgateway

- Virtual Network Gateways

avm-ptn-network-private-link-private-dns-zones

- Private DNS Zones

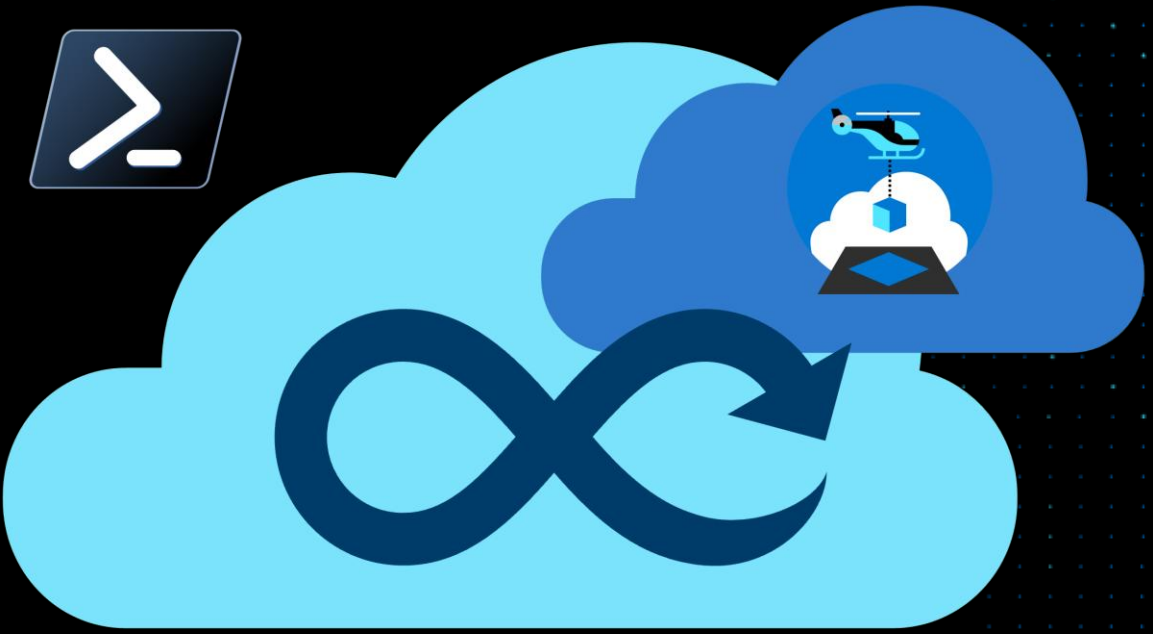
Pathway to v1.0.0 and Beyond



Target Timescales



ALZ Bicep & Terraform Accelerator Updates



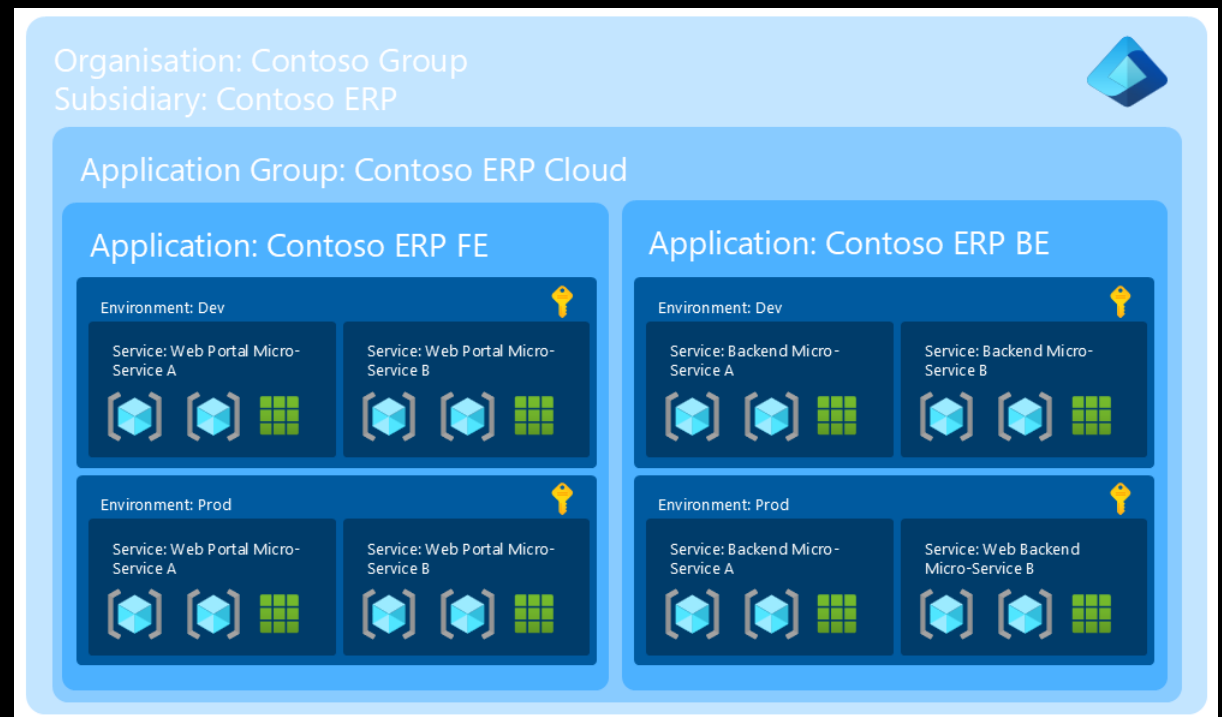
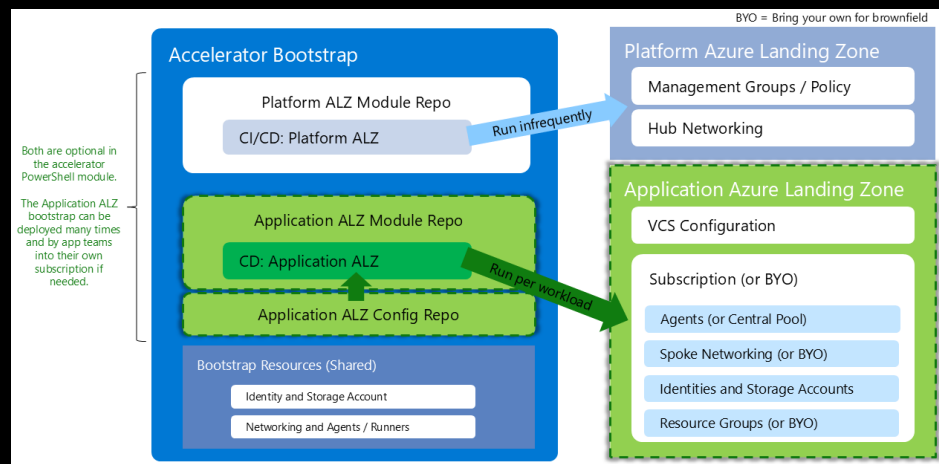
ALZ Accelerators Recent Updates

- Bicep end to end bootstrapping
- Centralised documentation: aka.ms/alz/accelerator/docs
- Input config file by default with multiple starter examples
- Complex types in input files
- Override any variable in input files



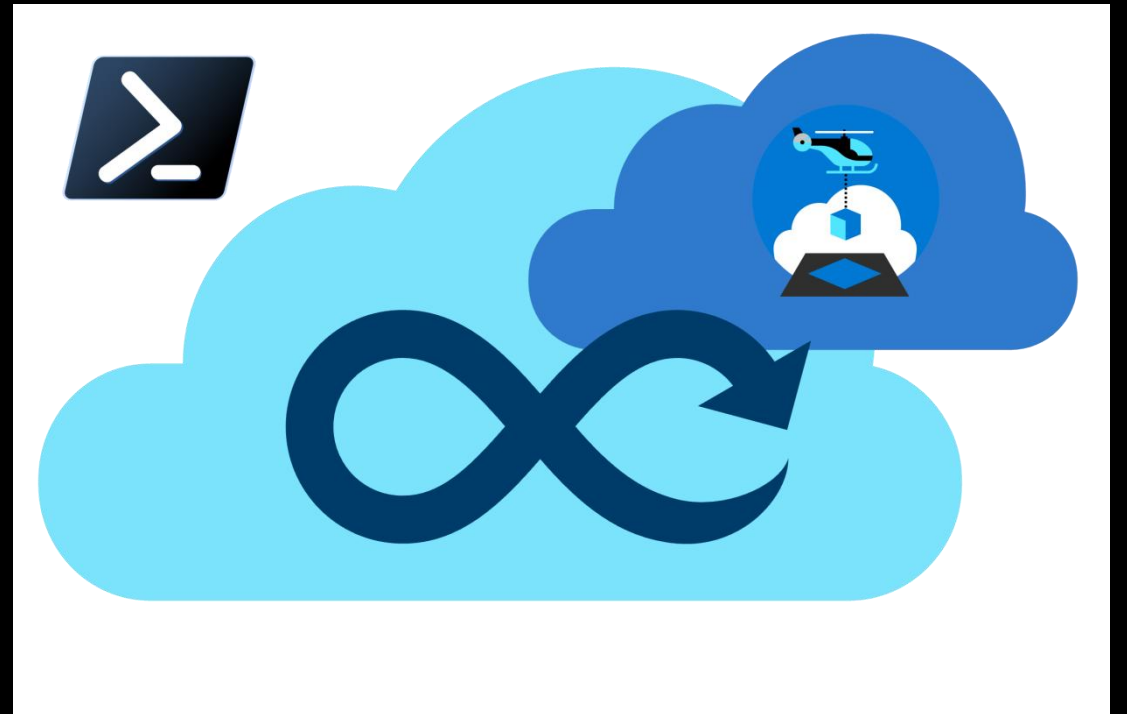
ALZ Accelerators Coming Soon!

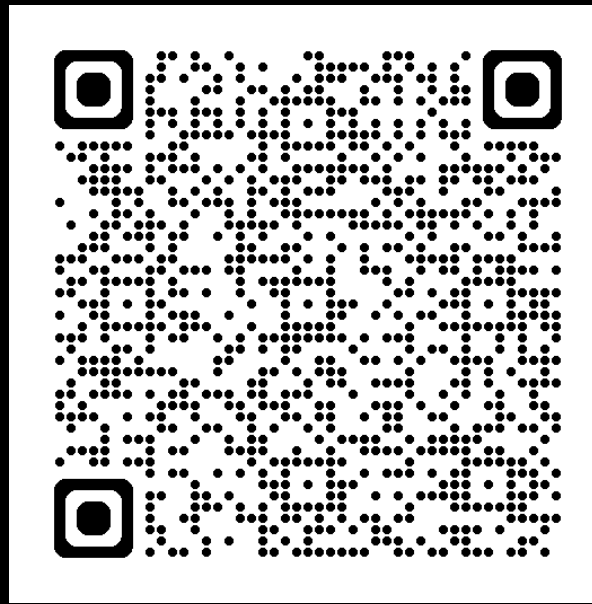
- Multi-region starter modules for Bicep and Terraform. Coming very soon!
- Application landing zones. Targeting end of 2024.
 - Includes and composes AVM Modules for:
 - Agents and Runners
 - Azure Bootstrap
 - GitHub Bootstrap
 - Azure DevOps Bootstrap



ALZ Accelerators Planning

- Removal of UI option?
- Only support config file as input.
- Better support for complex data types and overrides.





Azure Landing Zones

29th January 2025 - External Community Call



Registration:

<https://aka.ms/ALZ/CommunityCallRegister>

Agenda (please add suggestions):

<https://aka.ms/ALZ/CommunityCallAgenda>



Next Community Call will be on 29th January 2025 👍



Back to an APAC friendly time slot for this occurrence and then the one after will be back to this time slot 👍

Stay tuned to [issue #1774](#) (ALZ/ESLZ Repo)



Recordings will be available at:
aka.ms/ALZ/Community



This month's presenters:



Thank You!



Stay up-to-date:

<https://aka.ms/ALZ/WhatsNew>

